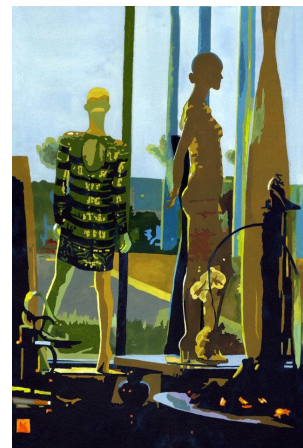




Anne Abgott

Author & Artist of "*Daring Color*"

Poppies



You have received two images of this subject please use the first for the flowers and the second for the glass shapes.

This class will be about putting a deep dark background, making the glass sparkle by saving the whites and catching the glow in the red poppies.

Please no masking

Have your drawing done carefully on the paper of your choice and size prior to the class.

I will be working on 300 lb paper smaller than 16x20 size for ease of teaching

Please have all your paints handy.

A Black and white copy of each image for your values.

A camera for reference shots.

Flat and Round brushes

Round 2,4,8,12,14

Flat 3/4 to 1 inch angle flat

The essential pigments are as follows

Gamboge

Quin Gold

Aueroline

Scarlet lake

Quin red by Holbein and Sennelier

Mineral Violet

Quin Magenta

Red Brown by Mission

Sap Green

Russian Green or Deep sap Green by Daniel Smith

Indigo

Helio Cerulian by Horadam Schminke

Burnt Sienna

Brown Madder

Undersea Green by Daniel Smith

Please no Cadmium Red !!!!!